



**FLAGSOURCE®**

J.C. SCHULTZ ENTERPRISES, INC.

**ADVANCEMENT THROUGH TECHNOLOGY**

**2024 CUSTOM PRODUCTS CATALOG**

*Quality flags and banners proudly made in America.*



# Welcome to FlagSource

## A Customer and Technology Focused Company

Welcome to FlagSource – A Customer and Technology Focused Company

Three years ago, the 4th generation of the Christiansen Family stepped up to take on the leadership of the company. As the new leadership team, we have shifted our focus to become a customer centric and technology driven organization. We believe this will make us a better partner for our customers.

Over the past 2 years, we have made significant capital investments to better serve the market, including new equipment that increases our capacity trifold. We have also upgraded our ERP system, built a new website and added additional color management software. This innovative technology will catapult FlagSource to become the premier large US Flag and Custom Flag manufacturer in the nation.

Equipment alone will not get us to the finish line. We have also invested in our team members to create a customer-focused culture. As the new owners, we are committed to making FlagSource the best partner in the industry. This means improving our service levels and customer service outreach. Our entire team is in lockstep with these goals and have pledged their commitment to these goals.

As we reflect on the last 3 years, it has been an incredible journey. We have accomplished a lot, but we have done it with heavy hearts. We lost our beloved CEO, Janice Christiansen, in March 2023 after a 28-month battle with glioblastoma. True to her legendary form, Janice was fearless in her battle and stayed close to the business until the very end. Her motto was, "The show must go on" so we will carry the business forward in her memory. Janice will be missed by her family, her FlagSource team and the many customers she connected with.

Looking to the future, the FlagSource team is committed to providing one of the best customer experiences possible. We are running 24 hours a day to ensure your order ships on time and we are excited to provide you with the highest quality products available!

Thank you for your business!



**Spencer and Jennifer Christiansen**  
*Owners of FlagSource*





**SPEED. QUALITY. GUARANTEED.**

**CUSTOM FLAGS SHIPPED WITHIN 5 DAYS FROM APPROVAL – GUARANTEED!**



**Our new program for customers who need custom nylon flags in a hurry**

We guarantee we will ship your custom order within 5 business days from artwork approval or we'll credit your order **50% or more**.

Custom Express nylon flags can be single or double faced with heading and grommets finishing only.

**Custom Flags – 5 Days Guaranteed!**

| Size   | Qty Min | Qty Max |
|--------|---------|---------|
| 2x3'   | 1       | 100     |
| 3x5'   | 1       | 100     |
| 4x6'   | 1       | 100     |
| 5x8'   | 1       | 100     |
| 6x10'  | 1       | 100     |
| 8x12'  | 1       | 12      |
| 10x15' | 1       | 12      |

*See page 7 for full details*

# TABLE OF CONTENTS

## CUSTOM PRODUCTS



- Custom Express Program ..... **7**
- Custom Flags ..... **8**
- Block-Out Polyester & Spun Polyester ..... **9**
- Monster & Vertical Flags ..... **10**
- Boat, Motorcycle & Car Flags..... **11**
- Guidons, Burgees & Tournament Golf Flags ..... **12**
- Garden Flags & Custom Stick Flags..... **13**
- Low Cost Digital Screen Printed  
Flags & Banners, Blade Banners ..... **14**
- Wave Banners™..... **15**
- Feather Flags, Superpole & Tire Mount ..... **16**
- Polyester Dye Sub Banners, Podium Banners..... **17**
- Vinyl & 600 Denier Avenue Banners..... **18**
- Bike Flags & Felt Pennants ..... **19**
- Coroplast & Polybag Yard Signs..... **20-21**
- Canopy Tents ..... **22**
- Solid Tents, Gonfalons & Parade Banners ..... **23**

## EXHIBIT & TRADE SHOW PRODUCTS



- Convertible & Premium Table Throws ..... **26**
- Stretch Table Throws,  
Solid Table Throws & Table Runners..... **27**
- Retractable Banners ..... **28**
- Easy Tube Banners, Step & Repeat Banners..... **29**
- SEG Banners & SEG Light Boxes ..... **30**
- SEG Light Box Folding Stands  
& Straight Tension Fabric Displays..... **31**

## GENERAL INFO



- Art Guidelines ..... **34**
- Fabric & Material, Production Methods ..... **35**
- Glossary of Standard Terms ..... **36**

# ADVANCEMENT THROUGH TECHNOLOGY



## MS JP7 Printer

Our MS JP7 printer is built for speed. This printer utilizes the latest technology to produce the highest-quality flags and banners in the industry.

*We are ready for the fast lane. Are you?*



## Zimmer Modus Loop Steamer

Our New Zimmer Modus Loop steamer will help us to shorten our lead times and provide an even higher quality product. This steamer allows our DuPont inks to penetrate the fibers to achieve near 100% saturation to the back side of our State, Military, Custom, and other printed digital flags and banners. The manufacturer of this machine Zimmer Austria is over 140 years old and has a commitment to perfection and high-quality-class machines in the textile market. The Modus will allow us to obtain excellent quality finishing results in brilliant colors while saving energy and allowing us to shorten our delivery time to you.

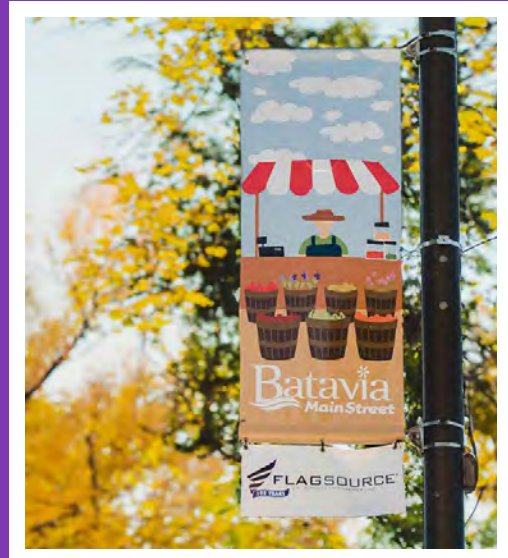


## Rotoflow Ferraro Washer

Our new Rotoflow Ferraro is a high-speed high-quality washing machine for our digitally printed 200 Denier nylon fabrics. The manufacturer of this machine has over 70 years of experience using the best technologies available in the textile finishing market. It was built with a commitment to sustainability allowing a low consumption of electrical power and water. The Rotoflow allows us the speed, quality, flexibility, and security in finishing our printed nylon which will allow us to maintain our on-time deliveries to you.







# Custom Products

|  |       |
|--|-------|
| CUSTOM EXPRESS PROGRAM.....  | 7     |
| CUSTOM FLAGS.....  | 8     |
| BLOCK-OUT POLYESTER, SPUN POLYESTER.....                               | 9     |
| MONSTER & VERTICAL FLAGS.....  | 10    |
| BOAT, MOTORCYCLE & CAR FLAGS.....                                      | 11    |
| GUIDONS, BURGEES & TOURNAMENT GOLF FLAGS.....                          | 12    |
| GARDEN FLAGS & CUSTOM STICK FLAGS.....                                 | 13    |
| LOW COST DIGITAL SCREEN PRINTED<br>FLAGS & BANNERS, BLADE BANNERS..... | 14    |
| WAVE BANNERS™.....   | 15    |
| FEATHER FLAGS, SUPERPOLE & TIRE MOUNT.....                             | 16    |
| POLYESTER DYE SUB BANNERS & PODIUM BANNERS.....                        | 17    |
| VINYL & 600 DENIER AVENUE BANNERS.....                                 | 18    |
| BIKE FLAGS & FELT PENNANTS.....  | 19    |
| COROPLAST & POLYBAG YARD SIGNS.....                                    | 20-21 |
| CANOPY TENTS.....  | 22    |
| SOLID TENTS, GONFALONS & PARADE BANNERS.....                           | 23    |



## Sienna puts you in control!

Using FlagSource custom templates together with the **Sienna Proofing Program** gives you greater control over the your final Custom product. No more worries about your artwork being altered or a miscommunication in size or quantities. Sienna puts you in control of what gets printed. You'll receive your proof within minutes so you can double check your design before it goes to print. Because Sienna speeds up the ordering and proofing process, your customer receives their order faster.

You can find our templates for Custom Flags, Guidons, Burgees, Pennants, Feather Flags, Wave Banners, Blade Banners, Cobra Banners, Avenue Banners, Retractable, Easy Tube and all Table Items at: [www.flagsource.com/home/resources#file-templates](http://www.flagsource.com/home/resources#file-templates)

*All prices subject to change without notice.*



# Custom Products

## LET US DESIGN IT FOR YOU!

### CUSTOM GRAPHIC DESIGNERS

Do you know what you want but don't have the artwork for the final product? Our graphic designers will create a custom design that reflects your message and style.

Ask one of our sales representatives how to get your custom design ideas on one of our many products.

### DIGITAL MAKES ALL THE DIFFERENCE

We offer the latest in digital print technology with both direct to nylon and sublimation to polyester fabrics. Many hours of research, testing, and dedicated work from our professional team and partners have gone into making our products the best in the industry.

All of this in consideration, there are still steps you can take to ensure that you are getting the best possible results on your custom orders.

### ARTWORK CHECKLIST

To ensure the best quality on all orders, please check the following before submitting artwork:

Visit: [www.flagsource.com/home/resources#file-templates](http://www.flagsource.com/home/resources#file-templates) for templates

- ✓ Artwork saved as an acceptable file type (vector art is always recommended)
- ✓ All fonts & strokes are outlined
- ✓ Artwork has been proofed and spell checked for errors
- ✓ Solid Coated Pantone® colors are included in artwork
- ✓ Artwork sized correctly for requested product
- ✓ Raster art: minimum of 150 DPI at actual print size (100%)

**\*\*WE CANNOT GUARANTEE OR MANAGE COLORS FROM RASTER ART FILES.\*\***

#### Recommended File Types:



**.eps** (Encapsulated PostScript)



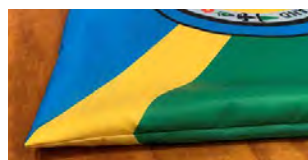
**.ai** (Adobe Illustrator Document)



**.pdf** (Portable Document Format)

See **Page 70**  
For Art  
Guidelines

**PILLOWCASING:** Add 25% to finishing price.



A special type of hemming done on certain double-sided flags. Designs that won't line up edge to edge get pillowcased or if there is an angled or some other special finish to the flag.

## KNOW YOUR OPTIONS:

These are the standard finishing and construction options for printed outdoor flags.

### SINGLE FACE REVERSE:

Printed on one side with full ink penetration so the reverse image is visible on the backside.

FRONT



REVERSE BACK



### DOUBLE FACE:

Constructed as two printed flags sewn back to back with a lightweight innerliner sewn in between.

FRONT



**Standard Innerliner** is a Tyvek® product.

BACK



### SLEEVE WITH TAB:

A finishing that will fit over a pole. The sleeve has a lining sewn in with a leather tab sewn in at the top center position. The standard pole hem size is 3". This fits a 1"-1¼" diameter pole. Can also be sewn "closed at top".



This sample is shown with fringe.

### FRINGE:

Available in White, Spanish Yellow, and Silver. Customer provides other colors if required.

### HEADING & GROMMETS:

Standard finishing for outdoor flags sized 6x10' or smaller. Heavy duty 9 oz. pure white poly sateen heading with two brass grommets.



### HEADING & D-RINGS:

Standard finishing for outdoor flags sized 8x12' or larger. Heavy duty 9 oz. pure white poly sateen heading with heavy chrome D-rings.







# NEED IT FAST? GET IN THE CUSTOM EXPRESS LANE!

**CUSTOM FLAGS SHIPPED WITHIN 5 DAYS FROM APPROVAL – GUARANTEED!**

## PROGRAM DETAILS

### WHAT SIZES AND QUANTITIES QUALIFY?

| Size   | Qty Min | Qty Max |
|--------|---------|---------|
| 2x3'   | 1       | 100     |
| 3x5'   | 1       | 100     |
| 4x6'   | 1       | 100     |
| 5x8'   | 1       | 100     |
| 6x10'  | 1       | 100     |
| 8x12'  | 1       | 12      |
| 10x15' | 1       | 12      |

- 200 Denier Nylon only.
- Heading and grommets or Heading and D-rings only.
- Left side heading only.
- Single or double-faced nylon.
- X-box finishing available for an extra charge.

### REQUIREMENTS TO QUALIFY FOR CUSTOM EXPRESS:

- Purchase order must be marked "CUSTOM EXPRESS."
- Customer to provide a purchase order, pricing, conforming artwork, and Pantone colors.
- Products outside the program must be on a separate purchase order, including stock items.
- Cannot make changes once art is approved.
- Account must be up to date.

### NOT INCLUDED FOR CUSTOM EXPRESS:

- Pillowcase sewing
- Fringe, pole hem, sleeves
- Pennants, banners, or burgees
- Extra grommets
- Heading on top
- Heading on the right
- USPS Shipping

*If we do not ship your Custom Express order within five (5) business days from artwork approval, send us a claim and we will issue the following discounts to your Custom Express order: 1 to 25 flags receive a 50% DISCOUNT, 26 to 100 flags receive 100% DISCOUNT*

Claim form can be found on our website: [www.flagsource.com/home/resources](http://www.flagsource.com/home/resources)

# Custom Flags

## DIGITAL NYLON

All flags are printed on **200 Denier Nylon**. Sizes up to 6x10' are finished with heading and grommets. Sizes 8x12' and larger are finished with heading and D-rings.

- Add **15%** for Pennants and **25%** for Burgees and Guidons
- See our website for all of our Sienna Templates
- Double face pricing includes a standard Tyvek® innerliner for sizes 12x18" through 5x8' and a Premium (blockout) innerliner for 6x10' through 10x15' size flags.
- One quantity minimum
- 600 DPI high resolution digital printing
- Ink penetrates to back side for single face reverse flags
- Perfect for 4-color process, spot colors, and full bleed artwork
- More sizes available, please call for pricing
- Production time is 6-8 business days
- No setup on 6+ flags with same art file, size and specifications
- Add **25% for pillowcase finish**
- Add **15% for double-faced flags with 2 different art files.**



## SINGLE FACE REVERSE



We've improved our pricing on quantities of 1, 2, and 3 custom flags, sizes 12x18" - 6x10'.

| Size   | Setup | 1+       | 2+       | 3+       | 6+       | 12+      | 25+      | 50+      | 100+     | 250+     | 500+     | 1000+    |
|--------|-------|----------|----------|----------|----------|----------|----------|----------|----------|----------|----------|----------|
| 12x18" | \$10  | \$80.00  | \$60.00  | \$44.00  | \$40.00  | \$34.40  | \$31.10  | \$25.60  | \$22.60  | \$21.80  | \$19.10  | \$18.40  |
| 2x3'   | \$50  | \$85.00  | \$76.00  | \$70.00  | \$63.00  | \$57.30  | \$50.50  | \$42.50  | \$41.00  | \$32.90  | \$30.00  | \$30.00  |
| 2.5x4' | \$50  | \$132.00 | \$120.00 | \$104.00 | \$74.00  | \$66.60  | \$57.10  | \$51.40  | \$48.50  | \$44.40  | \$39.20  | \$39.20  |
| 3x5'   | \$50  | \$139.00 | \$115.00 | \$110.00 | \$109.20 | \$75.40  | \$72.00  | \$65.40  | \$62.10  | \$57.10  | \$48.90  | \$46.50  |
| 4x6'   | \$50  | \$200.00 | \$190.00 | \$170.00 | \$139.50 | \$89.30  | \$77.50  | \$72.90  | \$72.30  | \$69.00  | \$69.00  | \$69.00  |
| 5x8'   | \$50  | \$270.00 | \$245.00 | \$235.00 | \$228.50 | \$141.00 | \$135.10 | \$125.10 | \$113.20 | \$109.90 | \$109.90 | \$109.90 |
| 6x10'  | \$50  | \$400.00 | \$384.00 | \$377.00 | \$276.60 | \$256.70 | \$228.10 | \$193.90 | \$167.00 | \$167.00 | \$167.00 | \$167.00 |
| 8x12'  | \$50  | \$484.00 | \$468.00 | \$444.00 | \$422.60 | \$408.00 | \$394.60 | \$383.00 | \$383.00 | \$383.00 | \$383.00 | \$383.00 |
| 10x15' | \$50  | \$628.00 | \$598.00 | \$564.00 | \$518.70 | \$486.40 | \$456.00 | \$431.80 | \$431.80 | \$431.80 | \$431.80 | \$431.80 |

No setup on 6+ flags with same art file, size and specifications.



We've improved our pricing on quantities of 1, 2, and 3 custom flags, sizes 12x18" - 6x10'.

## DOUBLE FACE

| Size   | Setup | 1+         | 2+         | 3+         | 6+         | 12+      | 25+      | 50+      | 100+     | 250+     | 500+     | 1000+    |
|--------|-------|------------|------------|------------|------------|----------|----------|----------|----------|----------|----------|----------|
| 12x18" | \$10  | \$99.80    | \$90.00    | \$80.00    | \$76.00    | \$66.30  | \$57.70  | \$48.00  | \$43.40  | \$39.80  | \$36.60  | \$33.60  |
| 2x3'   | \$50  | \$179.00   | \$170.00   | \$160.00   | \$123.30   | \$109.60 | \$97.80  | \$83.30  | \$80.30  | \$70.20  | \$64.10  | \$64.10  |
| 2.5x4' | \$50  | \$238.50   | \$224.00   | \$203.00   | \$142.40   | \$125.10 | \$109.90 | \$98.40  | \$88.30  | \$85.10  | \$73.40  | \$73.40  |
| 3x5'   | \$50  | \$280.00   | \$260.00   | \$244.00   | \$212.70   | \$144.00 | \$136.90 | \$129.50 | \$125.90 | \$123.40 | \$122.40 | \$121.00 |
| 4x6'   | \$50  | \$410.00   | \$396.00   | \$350.00   | \$266.70   | \$175.30 | \$161.70 | \$149.10 | \$144.00 | \$140.50 | \$136.80 | \$136.80 |
| 5x8'   | \$50  | \$530.00   | \$508.00   | \$494.00   | \$450.10   | \$282.60 | \$257.10 | \$249.10 | \$242.70 | \$237.70 | \$237.70 | \$237.70 |
| 6x10'  | \$50  | \$790.00   | \$770.00   | \$720.00   | \$548.60   | \$508.40 | \$480.40 | \$414.60 | \$364.50 | \$364.50 | \$364.50 | \$364.50 |
| 8x12'  | \$50  | \$920.00   | \$886.00   | \$856.00   | \$821.20   | \$777.50 | \$748.60 | \$718.20 | \$718.20 | \$718.20 | \$718.20 | \$718.20 |
| 10x15' | \$50  | \$1,210.00 | \$1,190.00 | \$1,080.00 | \$1,023.40 | \$986.80 | \$941.80 | \$883.90 | \$883.90 | \$883.90 | \$883.90 | \$883.90 |

No setup on 6+ flags with same art file, size and specifications.

| Pole Hem Only | Price Each |
|---------------|------------|
| 3x5'          | \$29.70    |
| 4x6'          | \$35.90    |
| 5x8'          | \$43.40    |

| Fringe Only | Price Each |
|-------------|------------|
| 3x5'        | \$29.70    |
| 4x6'        | \$35.90    |
| 5x8'        | \$43.40    |

| Pole Hem & Fringe | Price Each |
|-------------------|------------|
| 3x5'              | \$59.50    |
| 4x6'              | \$71.90    |
| 5x8'              | \$86.90    |

| 3" Pole Sleeve & Tab | Price Each |
|----------------------|------------|
| 3x5'                 | \$16.40    |
| 4x6'                 | \$21.60    |
| 5x8'                 | \$24.30    |



# Custom Flags

## BLOCK-OUT POLYESTER

A revolutionary NEW flag material. **It's one layer of fabric with block-out woven into it!** Production time is 10-12 business days.

- A more cost effective and better performing flag.
- Available in both single reverse and double sided.
- Available in these sizes only: 2'x3', 3'x5', 4'x6', 5'x8'
- Finished with heading and grommets ONLY.
- Double sided flags are a single layer of fabric that reads correctly on both sides.
- This process is for solid background colors, no art bleeds.
- No longer need 3 layers to print on both sides!
- Production time 10-12 business days.

## SINGLE FACE REVERSE

| Size | 1+       | 3+       | 6+       |
|------|----------|----------|----------|
| 2x3' | \$76.30  | \$47.60  | \$40.50  |
| 3x5' | \$105.10 | \$77.50  | \$67.40  |
| 4x6' | \$140.60 | \$102.60 | \$89.50  |
| 5x8' | \$214.80 | \$155.00 | \$138.30 |

## DOUBLE FACE

| Size | 1+       | 3+       | 6+       |
|------|----------|----------|----------|
| 2x3' | \$143.10 | \$90.10  | \$75.70  |
| 3x5' | \$190.80 | \$137.20 | \$119.20 |
| 4x6' | \$250.60 | \$175.40 | \$149.10 |
| 5x8' | \$380.50 | \$287.40 | \$235.00 |

# Custom Flags

## SPUN POLYESTER

A revolutionary NEW flag material. **This fabric is designed to fly in high winds!** Production time is 10-12 business days.

- This dye sublimation process allows for two pieces of paper to be printed and sandwiched between the Spun Polyester Fabric to provide a near 100% back side reverse print.
- Available in single reverse only.
- Available in these sizes only: 2'x3', 3'x5', 4'x6', 5'x8', 6'x10'
- Finished with heading and grommets ONLY.
- Fly-ends have four rows of lock stitching.
- This process is for solid background colors, no art bleeds.
- Production time 10-12 business days.

## SINGLE FACE REVERSE

| Size            | 1+       | 3+       | 6+       |
|-----------------|----------|----------|----------|
| 2x3'            | \$107.80 | \$68.40  | \$53.90  |
| 3x5'            | \$145.40 | \$101.90 | \$81.10  |
| 4x6'            | \$187.60 | \$130.40 | \$105.00 |
| 5x8'            | \$289.70 | \$202.90 | \$168.10 |
| 6x10' (w/ seam) | \$367.40 | \$315.20 | \$252.60 |

FRONT S/R



BACK S/R



FRONT S/R

BACK S/R



FRONT D/F

BACK D/F

Dye sublimation process • No special finishing • White is not bright white • Dye sub inks will fade faster than digital nylon inks

# Monster Flags

- One quantity minimum
- **200 Denier Nylon**
- Finished with heading and D-rings
- Flag printed at **high resolution**
- Full ink penetration for single-face reverse image
- More sizes available, please call for pricing
- Production time 10-15 business days
- **6-row hem on fly-end and 4-row hem on top and bottom**



## SINGLE FACE REVERSE

| Size   | 1+         | 3+         |
|--------|------------|------------|
| 12x18' | \$1,072.40 | \$1,011.90 |
| 15x25' | \$1,710.00 | \$1,625.30 |
| 20x30' | \$3,131.70 | \$2,975.00 |
| 20x38' | \$3,958.90 | \$3,756.40 |
| 25x40' | \$5,198.40 | \$4,932.70 |
| 30x50' | \$8,525.00 | \$8,094.80 |
| 30x60' | \$9,486.10 | \$9,018.30 |

# Vertical Flags

- One quantity minimum
- Printed on **200 Denier Nylon**
- Full ink penetration for single face reverse image
- **600 DPI** high resolution digital printing
- Perfect for 4-color process, spot colors, and full bleed artwork
- Finished with **heading & grommets** or **pole sleeve**
- More sizes available, please call for pricing
- Production time 7-10 business days



## HEADING & 5 GROMMETS

| Size   | 1+       | 3+       | 6+       | 12+      | 25+      |
|--------|----------|----------|----------|----------|----------|
| 5x3'   | \$164.00 | \$146.70 | \$112.00 | \$100.20 | \$92.10  |
| 6x2.5' | \$164.00 | \$146.70 | \$112.00 | \$100.20 | \$92.10  |
| 6x4'   | \$232.80 | \$192.20 | \$141.50 | \$123.80 | \$113.40 |
| 8x3'   | \$232.80 | \$192.20 | \$141.50 | \$123.80 | \$113.40 |
| 10x3'  | \$291.10 | \$240.30 | \$196.20 | \$184.40 | \$172.60 |
| 16x3'  | \$355.40 | \$309.90 | \$247.40 | \$230.40 | \$190.90 |

## 3" POLE SLEEVE W/ CLOSED TOP

| Size   | 1+       | 3+       | 6+       | 12+      | 25+      |
|--------|----------|----------|----------|----------|----------|
| 5x3'   | \$172.20 | \$154.90 | \$120.00 | \$108.10 | \$100.20 |
| 6x2.5' | \$172.20 | \$154.90 | \$121.20 | \$109.20 | \$101.60 |
| 6x4'   | \$242.20 | \$201.60 | \$150.80 | \$133.10 | \$122.40 |
| 8x3'   | \$244.80 | \$204.20 | \$153.30 | \$135.70 | \$125.10 |
| 10x3'  | \$305.30 | \$254.70 | \$210.60 | \$198.90 | \$187.00 |
| 16x3'  | \$381.60 | \$332.50 | \$263.30 | \$243.50 | \$204.10 |

- For a vinyl lined top section of pole sleeve **add \$8.00 to unit price.**
- If you need a 4" Pole Sleeve instead of 3" Pole Sleeve **add \$2.00 per running foot of the sleeve.**



# Boat Flags

## DIGITAL NYLON

All flags are printed on **200 Denier Nylon**, single face reverse or double face. Finished with heading and grommets. **600 DPI** high resolution digital printing. Production time is 10-12 business days.



## SINGLE FACE REVERSE

| Size   | Setup | 1+       | 3+      | 6+      | 12+     | 25+     | 50+     |
|--------|-------|----------|---------|---------|---------|---------|---------|
| 10x15" | \$10  | \$80.00  | \$44.00 | \$40.00 | \$34.40 | \$31.10 | \$25.60 |
| 12x18" | \$10  | \$80.00  | \$44.00 | \$40.00 | \$34.40 | \$31.10 | \$25.60 |
| 16x24" | \$10  | \$102.10 | \$97.80 | \$56.50 | \$45.10 | \$40.50 | \$33.80 |

Setup fee is per art file - same art file, size and specifications.

## DOUBLE FACE W/ INNERLINER

| Size   | Setup | 1+       | 3+       | 6+       | 12+     | 25+     | 50+     |
|--------|-------|----------|----------|----------|---------|---------|---------|
| 10x15" | \$10  | \$99.80  | \$80.00  | \$76.00  | \$66.30 | \$57.70 | \$48.00 |
| 12x18" | \$10  | \$99.80  | \$80.00  | \$76.00  | \$66.30 | \$57.70 | \$48.00 |
| 16x24" | \$10  | \$126.30 | \$115.50 | \$111.30 | \$93.30 | \$82.00 | \$65.20 |

Setup fee is per art file - same art file, size and specifications.

# Motorcycle Flags

## JET FLAG

All flags are double face, printed on **Jet Flag**. Flags finished with 1" open sleeve. **600 DPI** high resolution digital printing. Production time is 10-12 business days.

| Size   | Setup | 25+     | 50+     | 100+    | 250+    | 500+    | 1000+   |
|--------|-------|---------|---------|---------|---------|---------|---------|
| 6x9"   | \$10  | \$24.80 | \$19.90 | \$18.00 | \$16.10 | \$15.10 | \$14.70 |
| 10x15" | \$10  | \$24.80 | \$19.90 | \$18.00 | \$16.10 | \$15.10 | \$14.70 |

Setup fee is per art file - same art file, size and specifications.



# Car Flags

## JET FLAG

All flags are printed on **Jet Flag**, double face with liner. Flags finished with 1" open sleeve and mounted to car flag bracket. **600 DPI** high resolution digital printing. Production time is 10-12 business days.

| Size   | Setup | 12+     | 25+     | 50+     | 100+    | 250+    | 500+    | 1000+   |
|--------|-------|---------|---------|---------|---------|---------|---------|---------|
| 11x15" | \$10  | \$31.00 | \$24.80 | \$19.90 | \$18.00 | \$16.10 | \$15.10 | \$14.70 |

Setup fee is per art file - same art file, size and specifications.



**CAR FLAG BRACKET**  
Strong and durable!

# Guidons & Burgees

- One quantity minimum
- Printed on **200 Denier Nylon**
- Finished with heading and grommets or pole sleeve
- **600 DPI** high resolution digital printing
- Perfect for 4-color process, spot colors, and full bleed artwork
- Production time 7-10 business days



Rectangular

Tapered

### REINFORCEMENT

We reinforce the inside corner of our guidons with plastic for durability.



### SINGLE FACE REVERSE

| Size    | Finishing          | 1+       | 3+       | 6+      | 12+     | 25+     |
|---------|--------------------|----------|----------|---------|---------|---------|
| 20x27¾" | Heading & Grommets | \$124.20 | \$111.30 | \$72.70 | \$67.50 | \$58.50 |
|         | 3" Sleeve w/ Tab   | \$137.10 | \$124.80 | \$87.60 | \$84.20 | \$61.80 |

### DOUBLE FACE w/ pillowcase finish

| Size    | Finishing          | 1+       | 3+       | 6+       | 12+      | 25+      |
|---------|--------------------|----------|----------|----------|----------|----------|
| 20x27¾" | Heading & Grommets | \$232.20 | \$190.10 | \$164.30 | \$142.60 | \$113.90 |
|         | 3" Sleeve w/ Tab   | \$244.50 | \$207.90 | \$175.20 | \$153.50 | \$123.60 |



# Tournament Golf Flags

### DYE SUB DACRON

- All flags are 14x20" printed on **200 Denier Dacron**. Single sided or double face.
- Finished with PVC tube or heading and grommets. For short term use.
- **600 DPI** high resolution digital printing.
- Production time is 10-12 business days. For short term use.

### EVENT FLAGS (1 Art File) Single Sided

| Finishing          | Setup | 1+      | 9+      | 18+     | 25+     | 50+     | 100+    |
|--------------------|-------|---------|---------|---------|---------|---------|---------|
| Golf Tube          | \$10  | \$73.50 | \$36.10 | \$28.30 | \$26.90 | \$23.70 | \$22.60 |
| Heading & Grommets | \$10  | \$73.50 | \$33.90 | \$26.00 | \$24.80 | \$20.30 | \$18.60 |

### EVENT FLAGS (1 Art File) Double Face w/ Innerliner

| Finishing          | Setup | 1+       | 9+      | 18+     | 25+     | 50+     | 100+    |
|--------------------|-------|----------|---------|---------|---------|---------|---------|
| Golf Tube          | \$10  | \$124.00 | \$62.00 | \$54.20 | \$49.70 | \$46.30 | \$40.70 |
| Heading & Grommets | \$10  | \$124.00 | \$58.70 | \$51.90 | \$46.30 | \$38.30 | \$33.90 |



### SPONSOR FLAGS (9 or 18 Art Files) Single Sided

| Finishing          | 1+      | 9+      | 18+     |
|--------------------|---------|---------|---------|
| Golf Tube          | \$84.30 | \$50.60 | \$40.70 |
| Heading & Grommets | \$84.30 | \$48.50 | \$38.30 |

### SPONSOR FLAGS (9 or 18 Art Files) Double Face w/ Innerliner

| Finishing          | 1+       | 9+      | 18+     |
|--------------------|----------|---------|---------|
| Golf Tube          | \$134.60 | \$78.80 | \$69.80 |
| Heading & Grommets | \$134.60 | \$76.70 | \$67.70 |



# Garden Flags

## BLOCKOUT POLYESTER

- All flags are 18x12" single face reverse or double sided and printed on **Blockout Polyester**.
- Finished with 1" open sleeve on top.
- **600 DPI** high resolution digital printing.
- Production time is 10-12 business days.
- Garden Stake sold separately.



**GARDEN FLAG STAKE**  
GFS-1

## SINGLE FACE REVERSE

| Item   | Setup | 12+     | 25+     | 50+     | 100+    | 250+    | 500+   |
|--------|-------|---------|---------|---------|---------|---------|--------|
| 18x12" | \$10  | \$21.80 | \$20.10 | \$16.80 | \$14.40 | \$12.10 | \$9.50 |

## DOUBLE FACE

| Item   | Setup | 12+     | 25+     | 50+     | 100+    | 250+    | 500+    |
|--------|-------|---------|---------|---------|---------|---------|---------|
| 18x12" | \$10  | \$26.20 | \$24.10 | \$20.30 | \$17.40 | \$14.40 | \$11.50 |

Setup fee is per art file - same art file, size and specifications.

| Item                    | 12+     | 25+     | 50+     |
|-------------------------|---------|---------|---------|
| Garden Flag Stake GFS-1 | \$15.90 | \$14.60 | \$13.80 |

# Custom Stick Flags



## 4X6", 8X12" AND 12X18" STICK FLAGS

- All flags are printed on **100 Denier Polyester**, single sided.
- Flags are mounted to a wooden stick with wooden ball on top.
- Production time is 2-3 weeks depending on size of order.



| Quantity | 4x6"   | 8x12"  | 12x18"  |
|----------|--------|--------|---------|
| 100+     | \$6.70 | \$8.30 | \$13.30 |
| 250+     | \$5.40 | \$7.50 | \$10.60 |
| 500+     | \$4.40 | \$5.80 | \$8.40  |
| 1000+    | \$3.50 | \$5.00 | \$7.10  |
| 2000+    | \$3.10 | \$4.60 | \$6.40  |
| 2500+    | \$2.90 | \$4.30 | \$5.80  |
| 5000+    | \$2.80 | \$3.80 | \$5.10  |
| 10,000+  | \$2.40 | \$3.50 | \$4.70  |

\*Double Face Stick Flags available - Call or Email for Pricing.

# LOW COST Digital and Screen Printed **FLAGS** and **BANNERS**

We know that from time to time you get a request for high quality, low price flags and banners. FlagSource is now able to accommodate these needs.

For the most accurate pricing, we ask that you submit an art file so we can determine the best method of manufacturing. Quotes can be provided for jobs of 50 pieces or more. Quotes will be turned around within 24-36 hours.

Materials offered:

- 100 Denier Polyester
- 300 Denier Polyester
- 120 Gram Polyester Knit
- Satin

Whether you need 1/C or 4-CP print, these banners are a perfect option for large run jobs.

Email us with the desired application and the job specifications and we will determine the best manufacturing technique and fabric based on your specs.

Our globally sourced products have a production time of 3-4 weeks up to 1,000 pieces.



## Blade Banners

- Single Face reverse printed on **200 Denier Nylon** material
- Double Face with liner printed on **Jet Flag** material
- 10-foot tall blade pole.
- **600 DPI** high resolution digital printing.
- Perfect for 4-color process, spot colors, and full bleed artwork.
- Production time 6-8 business days



### 10' BLADE BANNER KIT

Includes 94.75" T x 40" W banner, 10' pole and ground stake.

| Item                | Setup | 1+       | 3+       | 6+       | 12+      | 25+      | 50+      |
|---------------------|-------|----------|----------|----------|----------|----------|----------|
| Single Face Reverse | \$50  | \$379.40 | \$359.60 | \$345.40 | \$340.50 | \$327.90 | \$321.00 |
| Double Face         | \$50  | \$554.30 | \$522.10 | \$494.90 | \$467.60 | \$437.50 | \$415.10 |

No setup on 6+ banners with same art file, size and specifications.

### 10' REPLACEMENT BLADE BANNER

Includes 94.75" T x 40" W banner.

| Item                | Setup | 1+       | 3+       | 6+       | 12+      | 25+      | 50+      |
|---------------------|-------|----------|----------|----------|----------|----------|----------|
| Single Face Reverse | \$50  | \$182.30 | \$162.50 | \$148.40 | \$143.50 | \$130.90 | \$123.90 |
| Double Face         | \$50  | \$357.40 | \$325.20 | \$297.90 | \$270.40 | \$240.50 | \$218.00 |

No setup on 6+ banners with same art file, size and specifications.

### BLADE POLE & ACCESSORIES

|          | Item           | Part #      | 1+       | 3+       | 6+       | 12+      | 25+      |
|----------|----------------|-------------|----------|----------|----------|----------|----------|
| <b>A</b> | 10' Blade Pole | BLADEPOLE10 | \$240.50 | \$224.40 | \$210.30 | \$204.00 | \$194.30 |
| <b>B</b> | Cobra Stand    | MB-XB       | \$160.40 | \$160.40 | \$160.40 | \$160.40 | \$160.40 |
| <b>C</b> | Water Bags     | WATERBAG    | \$32.20  | \$32.20  | \$28.90  | \$25.80  | \$25.80  |

Banners should not be displayed outdoors during extreme inclement weather.





14' WAVE  
BANNER STYLE



8' WAVE  
BANNER STYLE



# Wave Banners™

PROMOTE YOUR BUSINESS

- Single Face reverse printed on **200 Denier Nylon** material
- Double Face with liner printed on **Jet Flag** material
- Best indoor & outdoor advertising banner solution
- **600 DPI high resolution digital printing**
- Great for events: sporting, POP, retail signage, special occasions, etc.
- Banner attaches to Wave Pole in 60 seconds or less
- **Wave Pole is 14 feet tall and 8 feet tall**
- **Rotates 360° for constant banner visibility**
- Production time 6-8 business days

## 8' WAVE BANNER™ KIT

Includes 80.5"H x 24.25"W banner, 8' pole and ground stake.

| Item                | Setup | 1+       | 3+       | 6+       | 12+      | 25+      | 50+      |
|---------------------|-------|----------|----------|----------|----------|----------|----------|
| Single Face Reverse | \$50  | \$249.10 | \$245.10 | \$242.00 | \$235.60 | \$228.60 | \$226.30 |
| Double Face         | \$50  | \$338.90 | \$323.80 | \$308.70 | \$299.90 | \$285.10 | \$269.80 |

No setup on 6+ banners with same art file, size and specifications.

## 8' REPLACEMENT WAVE BANNER™

Includes 80.5"H x 24.25"W banner.

| Item                | Setup | 1+       | 3+       | 6+       | 12+      | 25+      | 50+      |
|---------------------|-------|----------|----------|----------|----------|----------|----------|
| Single Face Reverse | \$50  | \$135.20 | \$130.90 | \$128.10 | \$121.50 | \$114.40 | \$112.10 |
| Double Face         | \$50  | \$224.70 | \$209.90 | \$194.70 | \$185.90 | \$171.00 | \$155.50 |

No setup on 6+ banners with same art file, size and specifications.

## 14' WAVE BANNER™ KIT

Includes 132"H x 32"W banner, 14' pole and ground stake.

| Item                | Setup | 1+       | 3+       | 6+       | 12+      | 25+      | 50+      |
|---------------------|-------|----------|----------|----------|----------|----------|----------|
| Single Face Reverse | \$50  | \$310.50 | \$293.50 | \$281.80 | \$267.60 | \$259.30 | \$250.90 |
| Double Face         | \$50  | \$471.70 | \$435.30 | \$398.60 | \$377.30 | \$357.20 | \$340.70 |

No setup on 6+ banners with same art file, size and specifications.

## 14' REPLACEMENT WAVE BANNER™

Includes 132"H x 32"W banner.

| Item                | Setup | 1+       | 3+       | 6+       | 12+      | 25+      | 50+      |
|---------------------|-------|----------|----------|----------|----------|----------|----------|
| Single Face Reverse | \$50  | \$163.20 | \$146.50 | \$134.60 | \$120.40 | \$112.10 | \$103.80 |
| Double Face         | \$50  | \$324.50 | \$288.00 | \$251.30 | \$229.90 | \$210.00 | \$193.50 |

No setup on 6+ banners with same art file, size and specifications.

## WAVE POLE & ACCESSORIES

| Item                     | Part #     | 1+       | 3+       | 6+       | 12+      | 25+      |
|--------------------------|------------|----------|----------|----------|----------|----------|
| <b>A</b> 14' Wave Pole   | WAVEPOLE14 | \$181.20 | \$167.10 | \$159.00 | \$155.50 | \$154.40 |
| <b>B</b> 8' Wave Pole    | WAVEPOLE8  | \$151.10 | \$148.00 | \$139.80 | \$135.40 | \$127.10 |
| <b>C</b> Water Bags      | WATERBAG   | \$32.20  | \$32.20  | \$28.90  | \$25.80  | \$25.80  |
| <b>D</b> X Base 8' & 14' | X-BASE-7   | \$114.40 | \$114.40 | \$108.10 | \$108.10 | \$103.70 |

Banner and pole should not be displayed outdoors during extreme inclement weather.

# Feather Flags

## DIGITAL NYLON

- Printed **single face reverse**, these flags are available in six different sizes with two different shape options (*A & B pictured*). Flags printed on **200 Denier Nylon** and finished with heading and grommets or pole sleeve.
- One quantity minimum
- **600 DPI** high resolution digital printing.
- Perfect for 4-color process, spot colors, and full bleed artwork.
- Production time 7-10 business days



Shape A

Shape B

| Size  | Setup | 1+       | 3+       | 6+       | 12+      | 25+      | 50+      | Wt.    |
|-------|-------|----------|----------|----------|----------|----------|----------|--------|
| 8x2'  | \$50  | \$148.80 | \$143.30 | \$128.60 | \$119.80 | \$103.20 | \$100.60 | 2 lbs. |
| 10x2' | \$50  | \$188.40 | \$177.50 | \$157.00 | \$143.30 | \$134.90 | \$125.90 | 3 lbs. |
| 12x2' | \$50  | \$215.00 | \$199.50 | \$185.60 | \$172.00 | \$159.80 | \$148.80 | 4 lbs. |
| 8x3'  | \$50  | \$215.00 | \$199.50 | \$185.60 | \$158.20 | \$149.90 | \$128.60 | 5 lbs. |
| 10x3' | \$50  | \$256.00 | \$240.90 | \$213.40 | \$199.50 | \$185.60 | \$172.00 | 6 lbs. |
| 12x3' | \$50  | \$286.10 | \$268.40 | \$226.30 | \$212.10 | \$198.20 | \$184.50 | 7 lbs. |
| 16x3' | \$50  | \$337.10 | \$316.40 | \$280.70 | \$259.50 | \$217.30 | \$208.00 | 9 lbs. |

# Telescoping Superpole

- Our telescoping portable flagpole is perfect for RVs, sporting events, tailgating and property management locations.
- SuperPoles can adjust from 8 to 15-feet and 8 to 21-feet tall.
- Comes with **24" PVC ground sleeve**. (PVC ground sleeve may be cemented into the ground or you may purchase Superpole Ground Stake below.)



| Item      | Part # | 1+       | 3+       | 6+       | 12+      | 25+      | 50+      | Wt.    |
|-----------|--------|----------|----------|----------|----------|----------|----------|--------|
| SuperPole | SP15   | \$108.60 | \$102.70 | \$94.00  | \$91.00  | \$88.10  | \$84.50  | 6 lbs. |
| SuperPole | SP21   | \$124.80 | \$119.10 | \$112.60 | \$108.00 | \$104.40 | \$102.20 | 8 lbs. |

\*SuperPole ships UPS oversize.

# Superpole Ground Stake

Our 19-inch steel ground stake makes using your feather flag outdoors easy!



| Item            | Part # | Price   | Wt.      |
|-----------------|--------|---------|----------|
| SP Ground Stake | SPGS-1 | \$75.00 | 5.7 lbs. |

# Tire Mount

Our lightweight aluminum tire mount holds your feather flag and is **a must** for sporting events! Quick and easy setup.



| Item       | Part # | Price    | Wt.    |
|------------|--------|----------|--------|
| Tire Mount | TGS100 | \$145.20 | 3 lbs. |

# Polyester Dye Sublimation Banners

- 1 quantity minimum
- Print up to 60" or 72" wide without a seam depending on fabric.
- Production time is 10-12 business days.
- **\$50.00 setup charge** on orders up to 100 sq. feet per file with same art file and specifications.
- **Minimum \$60.00** per order not including setup
- Dye Sub **300 Denier** is an excellent choice for indoor use while **600 Denier** is a great choice for outdoor applications.
- **600 DPI** high resolution digital printing
- **300 Denier** is wrinkle resistant
- Please call for pricing for special shape, size, and finish



Poly Stretch - 72"

200 Denier Dacron - 72"

300 Denier Polyester - 69.5"

600 Denier Poly - 60" & 72"

Jet Flag - 60"

Decko Tex - 60"

## Single-Sided, Hemmed Sides & Reinforced Grommets

| Sq. Ft. | Setup | Less than 12 sq. ft. |
|---------|-------|----------------------|
| 1-100   | \$50  | \$10.00 / Sq. Ft.    |
| 101-249 | \$0   | \$9.30 / Sq. Ft.     |
| 250-499 | \$0   | \$8.10 / Sq. Ft.     |
| 500-999 | \$0   | \$6.90 / Sq. Ft.     |
| 1000+   | \$0   | \$6.50 / Sq. Ft.     |

Pricing for banner sizes under 12 sq. ft. per banner.

| Sq. Ft. | Setup | Greater than 12 sq. ft. |
|---------|-------|-------------------------|
| 1-100   | \$50  | \$8.50 / Sq. Ft.        |
| 101-249 | \$0   | \$7.20 / Sq. Ft.        |
| 250-499 | \$0   | \$6.60 / Sq. Ft.        |
| 500-999 | \$0   | \$5.40 / Sq. Ft.        |
| 1000+   | \$0   | \$4.70 / Sq. Ft.        |

Pricing for banner sizes over 12 sq. ft. per banner.

# Podium Banners



- Podium Banners come with crossbar, wooden balls, and hanging cord w/ tassels
- Material is a wrinkle resistant **300 Denier Polyester**
- Single sided



Tassel and flag pole with wooden round head included

| Size   | 1+       | 2+       | 3+       | 6+      | 12+     | 25+     | 50+     | 100+    | 250+    |
|--------|----------|----------|----------|---------|---------|---------|---------|---------|---------|
| 12x8"  | \$50.00  | \$42.50  | \$35.00  | \$30.00 | \$26.00 | \$23.50 | \$21.00 | \$18.50 | \$15.00 |
| 18x12" | \$60.00  | \$50.00  | \$40.00  | \$35.00 | \$31.00 | \$28.00 | \$25.00 | \$23.50 | \$19.90 |
| 24x18" | \$70.00  | \$60.00  | \$50.00  | \$43.50 | \$39.00 | \$35.00 | \$31.00 | \$27.50 | \$23.90 |
| 30x20" | \$80.00  | \$70.00  | \$65.00  | \$57.00 | \$50.00 | \$45.00 | \$40.00 | \$37.00 | \$32.00 |
| 36x24" | \$90.00  | \$83.00  | \$79.00  | \$75.00 | \$65.00 | \$55.00 | \$48.00 | \$43.00 | \$38.00 |
| 48x24" | \$100.00 | \$92.00  | \$85.00  | \$80.00 | \$72.00 | \$65.00 | \$58.00 | \$50.00 | \$45.00 |
| 48x30" | \$120.00 | \$110.00 | \$103.00 | \$96.00 | \$80.00 | \$72.00 | \$65.00 | \$55.00 | \$50.00 |





# Vinyl Avenue Banners

## 18 OZ. HEAVYWEIGHT VINYL

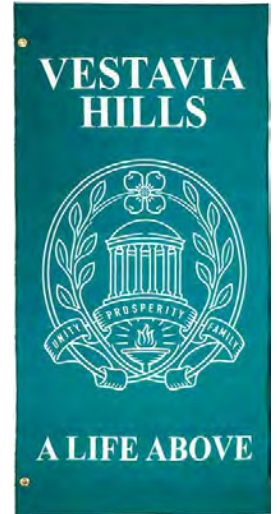
- Printed double-sided for outdoor display.
- Perfect for 4-color process, spot colors, and full bleed artwork.
- Finished with 3" sleeves.
- Production time is 7-10 business days.
- Add wind slits for \$5.00 per slit.
- Add \$8.00 per banner with 4" sleeves.
- **Other sizes available. Call for Pricing.**



| Size   | 1+       | 4+       | 6+       | 12+      | +26      | +50      | +100     |
|--------|----------|----------|----------|----------|----------|----------|----------|
| 36x18" | \$145.30 | \$90.70  | \$81.10  | \$75.50  | \$71.10  | \$67.60  | \$64.80  |
| 45x18" | \$145.30 | \$104.10 | \$89.90  | \$79.80  | \$75.50  | \$70.10  | \$66.90  |
| 48x24" | \$143.30 | \$121.60 | \$106.70 | \$101.30 | \$96.20  | \$91.90  | \$73.70  |
| 60x30" | \$211.70 | \$186.50 | \$162.20 | \$140.50 | \$125.80 | \$116.20 | \$106.20 |
| 72x23" | \$230.10 | \$207.30 | \$184.60 | \$161.80 | \$147.70 | \$137.90 | \$127.80 |
| 72x30" | \$235.20 | \$214.30 | \$191.90 | \$167.60 | \$154.00 | \$143.30 | \$135.00 |
| 84x30" | \$262.70 | \$241.30 | \$218.60 | \$194.60 | \$178.80 | \$170.30 | \$160.50 |
| 96x30" | \$291.20 | \$269.70 | \$244.20 | \$220.20 | \$206.00 | \$198.80 | \$187.40 |

# 600 Denier Avenue Banners

- Eye Catching High Quality, Dye Sublimation, Avenue Banners. Avenue Banners will dress up any downtown setting.
- Banners are warranted for 120 days in an outdoor setting.
- Finished with horizontal top and bottom 3" sleeves and 2 grommets for securing the banner against the pole.
- Banners are digitally printed on a 600 Denier Polyester fabric at **600 DPI** high resolution.
- Double face with Tyvek® innerliner.
- Production time is 10-12 business days.



| Size   | Setup | 1+       | 3+       | 6+       | 12+      | 25       | 50+      |
|--------|-------|----------|----------|----------|----------|----------|----------|
| 36x18" | \$50  | \$148.40 | \$122.20 | \$109.50 | \$102.20 | \$97.40  | \$92.40  |
| 48x18" | \$50  | \$158.80 | \$141.20 | \$121.70 | \$114.40 | \$107.20 | \$97.40  |
| 36x24" | \$50  | \$171.60 | \$140.10 | \$121.70 | \$114.40 | \$97.40  | \$92.40  |
| 48x24" | \$50  | \$177.50 | \$142.30 | \$130.20 | \$121.60 | \$110.70 | \$102.20 |
| 72x24" | \$50  | \$204.00 | \$164.10 | \$146.50 | \$140.10 | \$131.40 | \$126.60 |
| 60x30" | \$50  | \$245.80 | \$203.20 | \$185.00 | \$171.60 | \$160.60 | \$155.60 |
| 72x30" | \$50  | \$258.10 | \$216.00 | \$197.30 | \$182.90 | \$173.80 | \$169.10 |
| 84x30" | \$50  | \$272.20 | \$217.00 | \$211.20 | \$197.30 | \$187.80 | \$183.20 |
| 96x30" | \$50  | \$291.10 | \$249.00 | \$217.00 | \$216.00 | \$206.60 | \$201.90 |

No setup on 6+ banners with same art file, size and specifications.

## AVENUE BANNER BRACKETS

Cast aluminum brackets with fiberglass arms and stainless steel bands.

| Size | Construction | Part Number | 1+       | 3+       | 6+       | 12+      | 25+      | 50+      | Wt.     |
|------|--------------|-------------|----------|----------|----------|----------|----------|----------|---------|
| 18"  | Single       | 987F00600   | \$112.60 | \$108.10 | \$104.50 | \$97.30  | \$90.20  | \$83.40  | 5 lbs.  |
| 18"  | Double       | 987F00630   | \$180.70 | \$175.20 | \$172.60 | \$164.90 | \$161.20 | \$153.30 | 10 lbs. |
| 24"  | Single       | 987F00610   | \$131.00 | \$127.40 | \$124.10 | \$116.00 | \$109.80 | \$100.10 | 5 lbs.  |
| 24"  | Double       | 987F00640   | \$203.60 | \$200.10 | \$194.90 | \$188.50 | \$182.30 | \$176.20 | 10 lbs. |
| 30"  | Single       | 987F00620   | \$139.90 | \$135.70 | \$131.80 | \$125.80 | \$121.40 | \$114.20 | 6 lbs.  |
| 30"  | Double       | 987F00650   | \$217.80 | \$212.30 | \$209.80 | \$202.10 | \$198.00 | \$190.50 | 12 lbs. |



## Bike Flags



### 110 G POLY KNIT

These bike flags have gained popularity in marketing and serve as excellent mobile advertising tools. Whether in motion or stationary, they will effectively promote your brand and message. They also contribute to safety by boosting driver awareness and vigilance.

- Used for bicycle safety and marketing or advertising promotions.
- All flags are 7.9x11.8" single face reverse or double sided and printed on 110 G Poly Knit.
- Full color digital printing
- .59" exclusive sleeve
- Bike pole included



### SINGLE FACE REVERSE

| Item      | 1+      | 3+      | 6+      | 12+     | 25+     | 50+     |
|-----------|---------|---------|---------|---------|---------|---------|
| 7.9x11.8" | \$90.00 | \$45.00 | \$25.50 | \$18.00 | \$13.60 | \$11.80 |

### DOUBLE FACE

| Item      | 1+       | 3+      | 6+      | 12+     | 25+     | 50+     |
|-----------|----------|---------|---------|---------|---------|---------|
| 7.9x11.8" | \$105.00 | \$52.50 | \$32.00 | \$20.98 | \$18.00 | \$15.50 |

## Felt Pennants



### 280 G FELT

Schools and sports teams widely utilize felt pennants to express pride and they are ideal for parades and special events. They are available in 2 different styles. Our felt pennants are available in 12H x 20W" and printed on 280 G Felt single sided.

- Show your support for school or your sports teams with these felt pennants.
- **Style A** Finished with a tie string to tie on a stick or hand as a wall banner.
- **Style B** Finished with a .75" Sleeve to insert a stick into or use as a wall banner.
- Single sided 280 g felt. About .031 inches thick.
- Dye Sublimation printing
- **Custom sizes available. Call for Pricing.**
- Minimum order is 12 pennants.
- Full color digital printing



Style A



Style B

### SINGLE SIDED

| Item   | 12+     | 25+     | 50+     | 100+    | 250+    | 500+   |
|--------|---------|---------|---------|---------|---------|--------|
| 12x20" | \$18.50 | \$13.80 | \$12.20 | \$10.98 | \$10.36 | \$9.88 |

# Coroplast Yard Signs

## COROPLAST

### Two Piece Minimum

Our 4mm thick UV cured coroplast yard sign is the most durable and economical way to display your message and graphic designs outside. The H-Stakes can be paired with either your single or double-faced yard sign. Assembly is easy by simply sliding the H-Stake into the flutes of the sign. Signs available in 18H x 24W" and 24H x 36W", 1 sided or 2 sided. 1 color, 2 color and 4 color process printing.

- Durable 4mm Thick Colorplast with UV Print
- Graphic Finishing cut to size
- 9 Gauge Galvanized Steel ground stake w/ zinc coating
- Shipping wts: 18 lbs (graphics & stakes), 10 lbs (graphic only) per 20 pack
- Shipping dimensions 36"W x 24"H x 6"D. Printed on premium 4mil corrugated plastic in vibrant colors.
- Production begins the day after payment / art approval.
- UV Cured inks for outdoor durability.
- These signs are printed using Grand Format technologies and are meant to be viewed from 5+ feet.
- Turnaround time : 10 business days



| Size                   | Adtl. Charges              | 2+      | 6+      | 12+     | 24+     | 50+     | 100+    | 250+    | 500+   | 1,000+ |
|------------------------|----------------------------|---------|---------|---------|---------|---------|---------|---------|--------|--------|
| 18x24" 1/C<br>1 side   | 1/C Pantone<br>Match \$70  | \$47.70 | \$26.90 | \$14.90 | \$12.20 | \$11.20 | \$8.60  | \$7.10  | \$5.70 | \$5.10 |
| 18x24" 2/C<br>1 side   | 2/C Pantone<br>Match \$140 | \$51.80 | \$29.40 | \$15.90 | \$12.70 | \$10.90 | \$8.20  | \$7.20  | \$6.10 | \$5.40 |
| 18x24" 4 CP<br>1 side  | Print Per File             | \$55.80 | \$32.00 | \$16.40 | \$13.20 | \$11.40 | \$8.90  | \$8.40  | \$8.10 | \$7.70 |
| 18x24" 1/C<br>2 sides  | 1/C Pantone<br>Match \$70  | \$59.90 | \$35.50 | \$22.20 | \$15.20 | \$12.50 | \$9.10  | \$8.10  | \$7.20 | \$6.20 |
| 18x24" 2/C<br>2 sides  | 2/C Pantone<br>Match \$140 | \$63.90 | \$38.60 | \$23.30 | \$15.80 | \$13.00 | \$9.70  | \$8.60  | \$7.60 | \$6.60 |
| 18x24" 4 CP<br>2 sides | Print Per File             | \$68.00 | \$41.60 | \$24.60 | \$16.70 | \$12.70 | \$10.70 | \$10.00 | \$9.60 | \$9.10 |

| Size                   | Adtl. Charges              | 2+       | 6+      | 12+     | 24+     | 50+     | 100+    | 250+    | 500+    | 1,000+  |
|------------------------|----------------------------|----------|---------|---------|---------|---------|---------|---------|---------|---------|
| 24x36" 1/C<br>1 side   | 1/C Pantone<br>Match \$70  | \$91.40  | \$52.80 | \$32.50 | \$27.40 | \$19.80 | \$17.80 | \$12.70 | \$12.20 | \$11.50 |
| 24x36" 2/C<br>1 side   | 2/C Pantone<br>Match \$140 | \$96.40  | \$55.80 | \$33.00 | \$28.30 | \$20.20 | \$18.20 | \$13.00 | \$12.60 | \$11.90 |
| 24x36" 4 CP<br>1 side  | Print Per File             | \$100.50 | \$58.90 | \$34.20 | \$29.30 | \$21.00 | \$18.90 | \$16.70 | \$16.10 | \$12.30 |
| 24x36" 1/C<br>2 sides  | 1/C Pantone<br>Match \$70  | \$113.70 | \$72.10 | \$35.50 | \$32.00 | \$25.40 | \$20.80 | \$16.20 | \$13.70 | \$12.30 |
| 24x36" 2/C<br>2 sides  | 2/C Pantone<br>Match \$140 | \$117.70 | \$76.10 | \$40.60 | \$34.40 | \$25.90 | \$21.20 | \$16.60 | \$14.10 | \$12.70 |
| 24x36" 4 CP<br>2 sides | Print Per File             | \$121.80 | \$80.20 | \$45.70 | \$36.40 | \$26.40 | \$25.20 | \$17.90 | \$16.70 | \$14.70 |



# Polybag Yard Signs

## POLYBAG

This popular style sign is ideal for large marketing campaigns. The signs are more affordable and simpler to install saving you time and money. Two sizes are available in 16H x 24W" and 20H x 30W" and can be printed in 1-4 colors, this sign includes the ground stake. Two-sided blackout film used for no see-through signs.



- "Black out" lining, light will not show through the sign
- Double Sided imprint included
- Made from Heavy-Duty poly plastic
- No hassle installation
- Popular product for mass marketing campaigns
- Printed with UV inks, No fading!
- Ordering Bag Signs is cost effective with a minimum order of 1,000 Signs, smaller quantities are available but corrugated plastic would probably be cheaper. Printed in up to four vibrant spot colors.
- Because of the way that Bag Signs are manufactured there may be over or under run which will result in an additional charge or refund of money. We will take every effort to avoid this, but please account for this in your budget as a possibility
- Bag Sign Orders take on an average of 8-10 business days to manufacture from the time you approve the art work until the time the signs leave our facility.
- Your order will ship via TRUCK LINE/UPS Combo. Your wires will ship via truck line because of the weight. Bag signs fit nicely into 500 pcs a box and will ship via UPS/FedEx ground.
- Nearest Pantone color matching available
- Halftones for bag signs will be evaluated on a per design basis and may require adding a "color" to the price.
- Turnaround time: 15 business days

## GROUND BUSTER STAKES

Our Ground Buster Stakes are made with a 9-gauge galvanized steel with zinc coating making them perfect for outside use. The Ground Buster Stakes can be paired with either your single or double-faced yard sign.

- Galvanized Steel
- Industry standard wire
- 24"H x 8"W

| Size  | 1+     | 50+    | 1,000+ | 2,500+ |
|-------|--------|--------|--------|--------|
| 24x8" | \$2.40 | \$2.20 | \$2.10 | \$2.00 |



| Size                           | Adtl. Charges           | 500+    | 1,000+ | 1,500+ | 2,000+ | 2,500+ |
|--------------------------------|-------------------------|---------|--------|--------|--------|--------|
| 16x24" 1/C<br>(stake included) | 1/C Pantone Match \$70  | \$8.00  | \$5.40 | \$4.60 | \$4.30 | \$4.10 |
| 16x24" 2/C<br>(stake included) | 2/C Pantone Match \$140 | \$10.40 | \$6.20 | \$5.20 | \$4.70 | \$4.40 |
| 16x24" 3/C<br>(stake included) | 3/C Pantone Match \$210 | \$13.60 | \$7.60 | \$6.10 | \$5.30 | \$5.00 |
| 16x24" 4/C<br>(stake included) | 4/C Pantone Match \$280 | \$16.10 | \$8.60 | \$6.80 | \$5.90 | \$5.40 |

| Size                           | Adtl. Charges           | 500+    | 1,000+  | 1,500+ | 2,000+ | 2,500+ |
|--------------------------------|-------------------------|---------|---------|--------|--------|--------|
| 20x30" 1/C<br>(stake included) | 1/C Pantone Match \$70  | \$9.90  | \$6.30  | \$5.40 | \$4.90 | \$4.80 |
| 20x30" 2/C<br>(stake included) | 2/C Pantone Match \$140 | \$13.10 | \$7.50  | \$6.20 | \$5.60 | \$5.40 |
| 20x30" 3/C<br>(stake included) | 3/C Pantone Match \$210 | \$16.80 | \$9.30  | \$7.40 | \$6.50 | \$6.10 |
| 20x30" 4/C<br>(stake included) | 4/C Pantone Match \$280 | \$18.70 | \$11.00 | \$8.50 | \$7.30 | \$6.70 |

# Canopy Tents

## FULL COLOR PRINTED CUSTOM TENT

- Sublimated printing on **600 Denier Oxford** cloth
- **Carry Bag with wheels**
- **Flame Retardant and Waterproof**
- Lightweight, durable, rust-free, heavy duty aluminum frame
- Customized Travel Case with wheels included
- Production time is 7-8 business days

### Available Options:

- Full Back Walls and Half Side Walls (call for pricing)
- Spike and Rope Kits
- 7' Wave Banner™ Kit
- Tent Banner Mount Kit for 7' Wave Banner



**NEW SIZE**  
20x20'

## CANOPY TENT & FRAME

| Size   | 1+         | 3+         | 6+         |
|--------|------------|------------|------------|
| 10x10' | \$1,686.90 | \$1,620.50 | \$1,550.00 |
| 10x15' | \$2,123.30 | \$2,052.70 | \$1,982.40 |
| 10x20' | \$2,655.70 | \$2,601.60 | \$2,547.20 |
| 20x20' | \$7,800.00 | \$7,500.00 | \$7,300.00 |

## FULL BACK WALL

| Size             | 1+       | 3+       | 6+       |
|------------------|----------|----------|----------|
| 10x10' Back Wall | \$414.70 | \$373.00 | \$322.10 |
| 10x15' Back Wall | \$649.50 | \$587.80 | \$509.90 |
| 10x20' Back Wall | \$899.10 | \$829.30 | \$759.60 |
| 20x20' Back Wall | \$899.10 | \$829.30 | \$759.60 |

## HALF SIDE WALLS

| Size             | 1+       | 2+       |
|------------------|----------|----------|
| 10x10' Half Wall | \$273.80 | \$246.80 |
| 10x15' Half Wall | \$273.80 | \$246.80 |
| 10x20' Half Wall | \$273.80 | \$246.80 |



## 7' TENT WAVE BANNER™ KIT

Only available for Tent

Includes 64"Hx16.5"W banner, 7' pole and ground stake.



| Item                | Setup | 1+       |
|---------------------|-------|----------|
| Single Face Reverse | \$50  | \$253.10 |
| Double Face         | \$50  | \$344.00 |

## HALF WALL BAR & CLAMPS 1 SIDE

| Qty.  | 1+      |
|-------|---------|
| PRICE | \$99.30 |



Part Number  
HALFWALLBAR&CLAMP

## SPIKE & ROPE KIT

Kit contains 4 ropes and 4 spikes

| Qty.  | 1+      |
|-------|---------|
| PRICE | \$28.40 |



Part Number  
TENTSPIKES

## TENT BANNER MOUNT KIT

Necessary to mount 7' Wave Poles to Tents.

| Qty.  | 1+      |
|-------|---------|
| PRICE | \$94.00 |



**NEW**

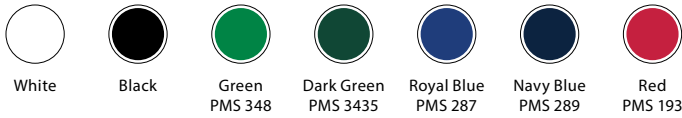
# Solid Tents



## 10X10' SOLID COLOR TENT

- Lightweight, durable, rust-free, heavy duty aluminum frame
- **600 Denier Oxford** cloth
- **Flame Retardant and Waterproof**

### Available Colors:



## CANOPY TENT & FRAME

| Size   | 1+       | 3+       | 6+       |
|--------|----------|----------|----------|
| 10x10' | \$985.00 | \$935.00 | \$885.00 |



## FULL WALL SOLID COLOR 10X10'

| Item                                   | 1+       | 3+       | 6+       |
|--|----------|----------|----------|
| Printed on 1 side (back side is white) | \$205.00 | \$195.00 | \$185.00 |
| Printed on 2 sides                     | \$248.00 | \$235.00 | \$225.00 |

# Gonfalon/Processional Banner

Gonfalons are processional banners that can be used at college graduations, religious ceremonies or organization celebrations.

Our Dye Sublimated Banners can be made with **Poly Dacron** or **300 D Poly** with a white Deko-Tex backing, a 3" sleeve at the top with an open notch in the middle to be used with a t-bar, finished with a V shape bottom. Fringe can be added for an additional price.

Banner will require an opening in the center of the back of the pole sleeve to accommodate the hardware that holds the 2 poles together.

| Item                       | Size   | Price    |
|----------------------------|--------|----------|
| Banner only (fits 30" kit) | 4x2.5' | \$210.60 |
| Banner only (fits 36" kit) | 5x3'   | \$243.80 |



| Item                      | Size              | Part Number    | Price    |
|---------------------------|-------------------|----------------|----------|
| 30" Gonfalon Hardware Kit | for 4x2.5' banner | GONFALON-30-V1 | \$342.70 |
| 36" Gonfalon Hardware Kit | for 5x3' banner   | GONFALON-36-V1 | \$348.10 |

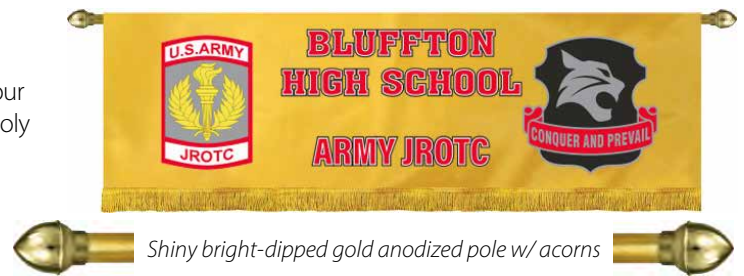
### Gonfalon Kit Includes:

(A) 8' Oak Pole, (B) Fancy Spear top, (C) Crossbar, (D) Brass Hook & Eye, (E) Universal Base.

# Custom Parade Banner

Take the lead with our parade marching banners. Let everyone know your school, organization or club with these beautiful Poly Dacron or 300 D Poly Dye Sublimated banners finished with pole sleeves and fringe.

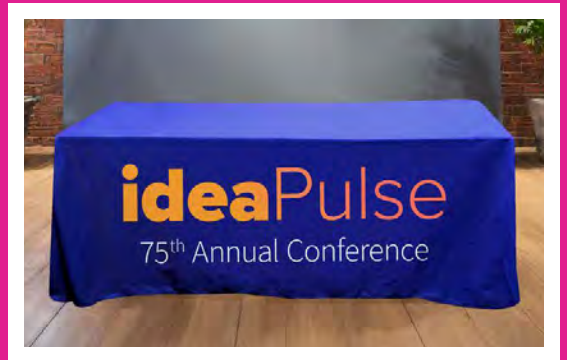
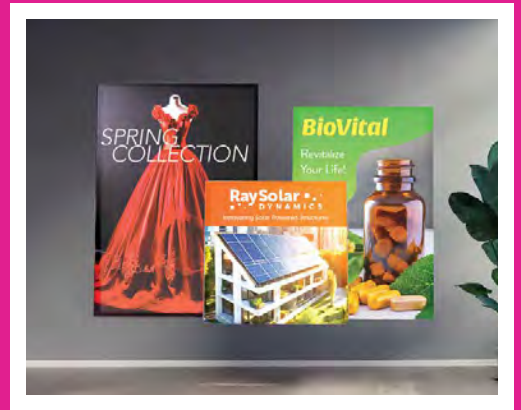
Dye Sublimated Banners can be made with **Poly Dacron** or **300 D Poly**. One sided banners finished with white Deko-Tex liner, 3" sleeves at the top and yellow, white, or silver fringe at the bottom.



| Item        | Size   | Price    | Item          | Size                     | Part Number         | Price    |
|-------------|--------|----------|---------------|--------------------------|---------------------|----------|
| Banner Only | 2.5x6' | \$243.80 | Gold Crossbar | 88" - for 2.5x6' banner  | GOLDCROSSBAR-88-V1  | \$133.00 |
| Banner Only | 2.5x8' | \$365.80 | Gold Crossbar | 112" - for 2.5x8' banner | GOLDCROSSBAR-112-V1 | \$170.70 |

Poles come with gold plated plastic acorn ornaments on each end.





# Exhibit & Trade Show Products

---

|  |    |
|--|----|
| CONVERTIBLE & PREMIUM TABLE THROWS .....                                 | 26 |
| STRETCH TABLE THROWS,<br>SOLID TABLE THROWS & TABLE RUNNERS.....         | 27 |
| RETRACTABLE BANNERS.....   | 28 |
| EASY TUBE BANNERS, STEP & REPEAT BANNERS .....                           | 29 |
| SEG BANNERS & SEG LIGHT BOXES .....                                      | 30 |
| SEG LIGHT BOX FOLDING STANDS<br>& STRAIGHT TENSION FABRIC DISPLAYS ..... | 31 |

## Quality Exhibit & Trade Show Displays

Elevate your brand presence at events or retail spaces with our diverse range of products for exhibits and trade shows. Whether you need a professional backdrop, a portable promotional display, or a vibrant branded table setup, we've got you covered. Make a lasting impression with these high-quality, customizable displays that captivate and leave a lasting impression on your audience.

# Convertible Premium Table Throws

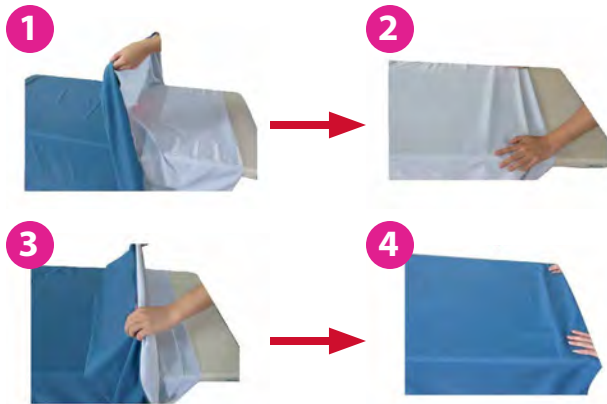
**DIGITALLY PRINTED ON 300 DENIER POLYESTER (polyester poplin equivalent)**

One table throw for two different size tables! Our new versatile table throws fit both 6' and 8' tables and are completely custom printed. These throws cover all sides, including the back. Converts in four easy steps!

- **Wrinkle and stain resistant**
- **Flame Retardant and machine washable**
- **600 DPI** high resolution digital printing.
- **NO SETUP FEES**
- Production time is 7-10 business days.



PVC Carrying Case included.



**NEW LOWER PRICES**

## CONVERTIBLE TABLE THROW

| Size             | 1+       | 3+       | 6+       | 12+      | 25+      | 50+      | 100+     | 250+     |
|------------------|----------|----------|----------|----------|----------|----------|----------|----------|
| 6-8' Convertible | \$335.30 | \$265.90 | \$243.90 | \$221.00 | \$212.00 | \$200.10 | \$195.50 | \$193.70 |

Pricing is for same art file, size and specifications.

# Premium Table Throws

**DIGITALLY PRINTED ON 300 DENIER POLYESTER (polyester poplin equivalent)**

These table throws can be completely custom printed for an incredible presentation! These throws cover all sides, including the back. Available in two sizes to fit both 6-foot and 8-foot tables.

- **Wrinkle resistant and machine washable**
- **600 DPI** high resolution digital printing.
- **NO SETUP FEES**
- Production time is 6-8 business days.



PVC Carrying Case included.

**NEW LOWER PRICES**

| Qty. | 88x132" 6' Table | 88x156" 8' Table |
|------|------------------|------------------|
| 1+   | \$268.20         | \$312.80         |
| 3+   | \$221.20         | \$243.70         |
| 6+   | \$199.00         | \$221.20         |
| 12+  | \$176.60         | \$199.00         |
| 25+  | \$166.40         | \$189.90         |
| 50+  | \$155.30         | \$178.30         |
| 100+ | \$150.80         | \$173.90         |
| 250+ | \$144.80         | \$171.00         |

Pricing is for same art file, size and specifications.





# Stretch Table Throws

## DIGITALLY PRINTED ON POLY STRETCH FABRIC

Our stretch table throws conform tightly to the shape of your table for a clean, streamlined look. We offer two designs: open back and zippered back. The open back offers open space for under table storage while the zippered back offers extra security with a closed storage space. Available in two sizes to fit both 6-foot and 8-foot tables.

- **Wrinkle and stain resistant**
- **Flame Retardant and machine washable**
- **600 DPI** high resolution digital printing.
- **NO SETUP FEES**
- Production time is 6-8 business days.

### SECURE FIT

Sewn-in foot pockets make for a secure fit that will last all day long.



PVC Carrying Case included.



Open back



| Size         | 1+       | 3+       | 6+       | 12+      | 25+      | 50+      | 75+      | 100+     |
|--------------|----------|----------|----------|----------|----------|----------|----------|----------|
| 6' Open Back | \$290.50 | \$234.80 | \$189.10 | \$172.60 | \$161.70 | \$153.50 | \$145.30 | \$138.00 |
| 8' Open Back | \$313.30 | \$245.70 | \$212.90 | \$189.10 | \$183.60 | \$177.20 | \$172.60 | \$170.80 |

Pricing is for same art file, size and specifications.



Zippered back

| Size           | 1+       | 3+       | 6+       | 12+      | 25+      | 50+      | 75+      | 100+     |
|----------------|----------|----------|----------|----------|----------|----------|----------|----------|
| 6' Zipper Back | \$312.40 | \$312.40 | \$245.70 | \$212.90 | \$196.40 | \$178.10 | \$161.70 | \$153.50 |
| 8' Zipper Back | \$335.30 | \$335.30 | \$257.60 | \$234.80 | \$207.40 | \$196.40 | \$187.30 | \$178.10 |

Pricing is for same art file, size and specifications.

# Table Runners

## DIGITALLY PRINTED ON 300 DENIER POLYESTER (polyester poplin equivalent)

Printed on 300 Denier Polyester (polyester poplin equivalent).

- **Great addition to a solid table throw**
- **Wrinkle and stain resistant**
- **Wrinkle resistant and machine washable**
- **600 DPI** high resolution digital printing.
- **NO SETUP FEES**
- Production time is 6-8 business days.



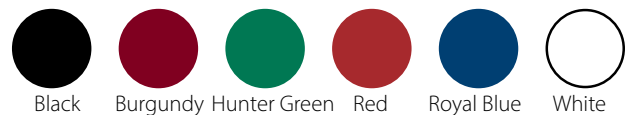
Pricing is for same art file, size and specifications.

| Size   | 1+       | 3+       | 6+       | 12+      | 25+      | 50+      |
|--------|----------|----------|----------|----------|----------|----------|
| 72x30" | \$142.20 | \$123.30 | \$104.30 | \$94.90  | \$90.50  | \$85.30  |
| 72x36" | \$161.20 | \$142.20 | \$127.50 | \$113.80 | \$106.40 | \$99.00  |
| 72x48" | \$208.50 | \$189.50 | \$176.00 | \$170.60 | \$141.00 | \$129.60 |

# Solid Table Throws

## SOLID POLYESTER

These high quality, solid-colored table throws cover all four sides of a table and pair nicely with one of our poly poplin table runners. These are available in 6 standard colors, listed below.



| Size               | 1+       | 3+       | 6+      | 12+     | 25+     | 50+     |
|--------------------|----------|----------|---------|---------|---------|---------|
| 88x132" (6' Table) | \$97.20  | \$90.10  | \$83.10 | \$78.60 | \$76.20 | \$74.00 |
| 88x156" (8' Table) | \$106.30 | \$102.90 | \$90.10 | \$86.80 | \$83.10 | \$80.90 |

## Tabletop Retractable Banners

### SINGLE SIDED TABLE TOP BANNER SET

**600 Denier Polyester.** Set comes with Stand & Carrying Case. **600 DPI high resolution digital printing.** Banners are available in size: 16.5"H x 11.75"W.

Production time is 6-8 business days.

#### NO SETUP FEES

Perfect for trade shows or in-store counter top displays!



back side



| Size         | Qty. | 600 Denier | Wt.    |
|--------------|------|------------|--------|
| 16.5"x11.75" | 1+   | \$68.10    | 3 lbs. |
|              | 3+   | \$59.60    | 3 lbs. |
|              | 6+   | \$53.30    | 3 lbs. |

## Economy Retractable Banners

### SINGLE SIDED BANNER SET

**600 Denier Polyester.** Set comes with Stand & Padded Case. **600 DPI high resolution digital printing.** Banners are available in 78"H x 33"W.

Production time is 6-8 business days.

#### NO SETUP FEES

Perfect for trade show booths or in-store displays!



| Size   | Qty. | 600 Denier | Wt.     |
|--------|------|------------|---------|
| 78x33" | 1+   | \$238.90   | 19 lbs. |
|        | 3+   | \$232.10   | 19 lbs. |
|        | 6+   | \$222.60   | 19 lbs. |



Carrying Case included

## Premium Retractable Banners

**600 Denier Polyester.** Set comes with Stand & Padded Case. **600 DPI high resolution digital printing.** Banners are available in two sizes: 84"H x 33"W and 84"H x 47"W.

Production time is 6-8 business days.

#### NO SETUP FEES

Perfect for trade show or in-store displays!



### SINGLE SIDED BANNER SET

| Size   | Qty. | 600 Denier | Wt.     |
|--------|------|------------|---------|
| 84x33" | 1+   | \$281.90   | 19 lbs. |
|        | 3+   | \$271.10   | 19 lbs. |
|        | 6+   | \$260.30   | 19 lbs. |
| 84x47" | 1+   | \$442.40   | 25 lbs. |
|        | 3+   | \$409.80   | 25 lbs. |
|        | 6+   | \$388.20   | 25 lbs. |



Carrying Case (included with set)

### REPLACEMENT BANNER

| Size   | Qty. | 600 Denier | Wt.     |
|--------|------|------------|---------|
| 84x33" | 1+   | \$135.00   | 19 lbs. |
| 84x47" | 1+   | \$162.00   | 25 lbs. |

Additional \$20 for mounting.

## Double Sided Retractable Banners

### DOUBLE SIDED BANNER SET

Banner is 84"H x 33"W and is printed double-sided on **600 Denier Polyester.**

**600 DPI high resolution digital printing.**

Set comes with Stand & Padded Case.

Production time is 6-8 business days.

#### NO SETUP FEES

Perfect for trade show booths or in-store displays!



| Size   | Qty. | 600 Denier | Wt.     |
|--------|------|------------|---------|
| 84x33" | 1+   | \$477.00   | 22 lbs. |
| 84x33" | 3+   | \$464.00   | 22 lbs. |
| 84x33" | 6+   | \$453.20   | 22 lbs. |



Back



Carrying Case included

# EasyTube Banners

## DOUBLE SIDED BANNER SET

- Banners are 7.5' tall and 2', 3', 4', or 5' wide and digitally printed on **Stretch Polyester**.
- 600 DPI** high resolution digital printing.
- These double-sided banners make a **powerful impression**. They offer a large, attractive display with quick and easy setup. Perfect for indoor use or outdoor use with sandbag for extra stability.
- Set includes Tension Fabric graphic, aluminum tube frame, steel base and carry case.
- Production time is 10-12 business days.
- NO SETUP FEES**



| Size   | 1+       | 3+       | 6+       |
|--------|----------|----------|----------|
| 7.5x2' | \$342.00 | \$318.20 | \$296.60 |
| 7.5x3' | \$454.40 | \$443.70 | \$427.40 |
| 7.5x4' | \$573.50 | \$557.30 | \$530.20 |
| 7.5x5' | \$687.20 | \$662.30 | \$638.40 |

# Step & Repeat Banners

## 300 DENIER POLYESTER

Our step and repeat banner creates a perfect photo backdrop. Ideal for movie premieres, new product launch events, birthday parties, athletic teams or anywhere you want your logo front and center. Production time is 7-10 business days.

| Size | 1+*      |
|------|----------|
| 5x5' | \$168.80 |
| 6x6' | \$241.10 |
| 7x7' | \$325.40 |
| 8x5' | \$265.10 |
| 8x6' | \$319.40 |
| 8x8' | \$421.80 |



\*Banner only.

## STEP & REPEAT FRAME

Hardware can adjust to fit banners 5x5' up to 8x8'. Heavy duty aluminum will allow this stand to be used for years to come. Carry bag included.



| Step & Repeat Hardware |
|------------------------|
| \$434.20               |
| Part Number            |
| STEP&REPEATFRAME       |



# SEG Banners NEW

## 260 GRAM BACKLIT FABRIC

Discover our impressive SEG (silicone edge graphic) Banners, offered in three convenient sizes: small (24x24"), medium (35.5x24"), and large (39.5x24"). Printed on flame-retardant 260-gram backlit fabric, these banners showcase your images with vibrant clarity. Choose between a silver or black frame.

- Flame-retardant 260 Gram Backlit Fabric
- Perfect for showrooms, retail spaces, and POP displays.
- Single sided with silver or black frame.
- Production time is 10-12 business days

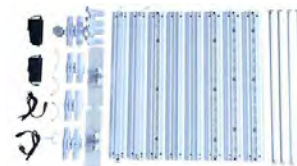


| Frame Color | Size     | Price    |
|-------------|----------|----------|
| Silver      | 24x24"   | \$156.00 |
| Black       | 24x24"   | \$156.00 |
| Silver      | 35.5x24" | \$200.00 |
| Black       | 35.5x24" | \$200.00 |
| Silver      | 39.5x24" | \$224.00 |
| Black       | 39.5x24" | \$224.00 |

# SEG Light Boxes NEW

## 150 GRAM BACKLIT FABRIC

- Flame-retardant 150 Gram Backlit Fabric
- Perfect for trade shows, POP displays, or sales presentations.
- UL listed
- Includes 2 single sided printed banners.
- Production time is 10-12 business days



Frame and carrying case included

| Frame Color | Size       | Price      |
|-------------|------------|------------|
| Silver      | 8'2" x 10' | \$2,900    |
| Silver      | 8'2" x 20' | \$5,190.00 |



# SEG Light Box NEW Backlit Stands 78x32"

## 150 GRAM BACKLIT FABRIC

- Flame-retardant 150 Gram Backlit Fabric
- Perfect for trade shows, POP displays, or sales presentations.
- UL listed
- Includes 1 single sided printed banner.
- Production time is 10-12 business days



Frame and carrying case included

| Frame Color | Size   | Price    |
|-------------|--------|----------|
| Silver      | 78x32" | \$698.00 |



# Straight Tension NEW Fabric Displays

## 280 BLOCKOUT

High-quality backdrops crafted for longevity and exceptional performance. Meticulously made to perfection, these backdrop displays are designed to be easily folded and reused multiple times. Ideal for trade shows, POP displays, or sales presentations.

- Flame-Retardant 280 Blockout
- Available both Single and Double Sided.
- Production time is 10-12 business days



# SEG Light Box NEW Folding Stands

## 150 GRAM BACKLIT FABRIC

A revolutionary light box that effortlessly folds into a convenient carrying case. Ideal for trade shows, POP displays, or sales presentations.

- Flame-retardant 150 Gram Backlit Fabric
- UL listed
- Includes 2 single sided printed banners.
- Production time is 10-12 business days



Folding stand can be set up in minutes, no tools required!

| Frame Color | Size   | Price      |
|-------------|--------|------------|
| Silver      | 78x32" | \$1,270.00 |
| Silver      | 78x39" | \$1,290.00 |



Frame and carrying case included



Frame and carrying case included

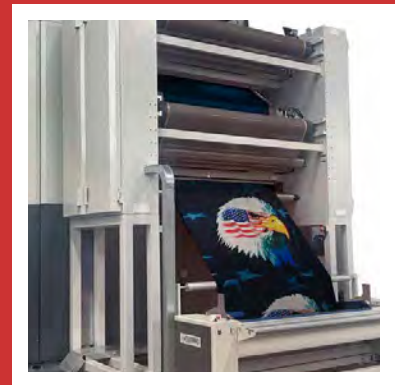
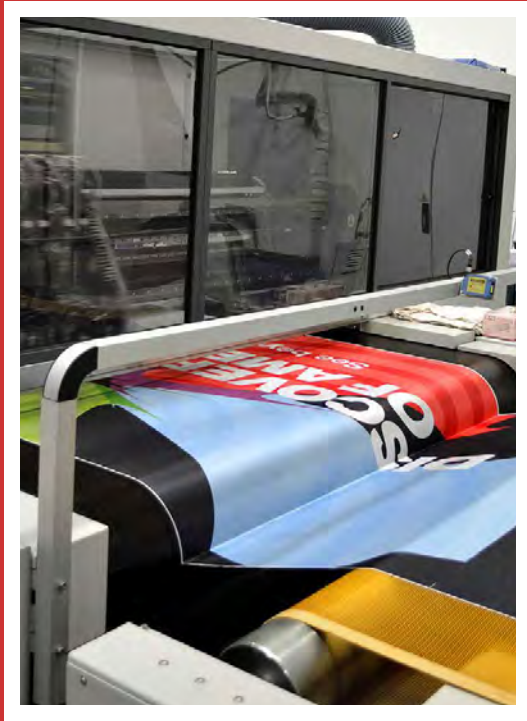
## SINGLE-SIDED

| Frame Color | Size     | Price      |
|-------------|----------|------------|
| Silver      | 7.5'x8'  | \$732.00   |
| Silver      | 7.5'x10' | \$830.00   |
| Silver      | 7.5'x20' | \$1,364.00 |

## DOUBLE-SIDED

| Frame Color | Size     | Price      |
|-------------|----------|------------|
| Silver      | 7.5'x8'  | \$796.00   |
| Silver      | 7.5'x10' | \$900.00   |
| Silver      | 7.5'x20' | \$1,516.00 |







# General Information

---

|   |    |
|---|----|
| ART GUIDELINES .....                        | 34 |
| FABRIC & MATERIAL, PRODUCTION METHODS ..... | 35 |
| GLOSSARY OF STANDARD TERMS .....            | 36 |

## Resources You Can Use

We take pride in our fabrics and production practice. With state-of-the-art technology and years of experience, we are dedicated to producing quality products at every step of the production process. We want to provide you with all of the information you need to ensure the best quality on all orders. With the right information about our materials, our production processes, and our art guidelines, you can help us provide an even better product.

# Art Guidelines

## OUR GRAPHICS TEAM

At FlagSource, we are both Mac and PC based and use the latest version of Adobe Creative Cloud software. We use the Pantone Matching System® and can color match with **Solid Coated Pantone® colors** only. To ensure the best quality on all orders, please use our checklist below before submitting artwork.

- ✓ Artwork saved as an acceptable file type (listed below)
- ✓ All fonts & strokes are outlined
- ✓ Artwork has been proofed and spell checked for errors
- ✓ Solid Coated Pantone® colors are included in artwork (for best guarantee on color match)
- ✓ Artwork sized correctly for requested product (visit: [www.flagsource.com/home/resources#file-templates](http://www.flagsource.com/home/resources#file-templates) for artwork templates)
- ✓ **Raster files:** minimum of 150 DPI at actual print size (100%)

### VECTOR ART *(Recommended for all products)*

- Made up of paths, points, angles and curves
- Can be scaled to **any size** without sacrificing quality
- Easy to adjust colors without sacrificing quality

#### Acceptable File Types:



**.eps** (Encapsulated PostScript)



**.ai** (Adobe Illustrator Document)



**.pdf** (Portable Document Format)

### RASTER ART *(We cannot guarantee color matching)*

- Made up of pixels
- Loses quality when enlarged / scaled up
- Can typically be scaled down without sacrificing quality

#### Acceptable File Types:



**.psd** (Adobe Photoshop Document)



**.tiff** (Tagged Image File Format)



**.jpeg** (Joint Photographic Experts Group)

*\*JPEG files are a compressed file type and are often low resolution. While we do accept .jpeg files we do not recommend them.*



Vector Art

Raster Art

## NEED ASSISTANCE WITH YOUR ARTWORK?

If you need help adjusting artwork or placing colors, our graphics team will be happy to assist you. All graphics related inquiries can be directed to [orders@flagsource.com](mailto:orders@flagsource.com). For information about ordering one of our printed nylon color charts, please call (800) 323-9127.

Email art files to our graphics department: [orders@flagsource.com](mailto:orders@flagsource.com)

or upload to our FTP page: [www.hightail.com/u/FlagSource](http://www.hightail.com/u/FlagSource)

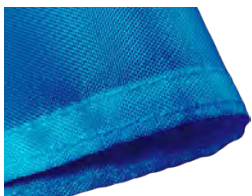
**Dies, Tools, Patterns and Art Files:** Charges made for dies, tools and patterns are part of the purchase price of the goods and do not convey ownership to Buyer. All dies, tools and patterns remain the property of Seller, unless otherwise agreed by Seller in writing.

**Split Destination or Drop Shipments:** \$12.50 net per location.

# Fabric & Material

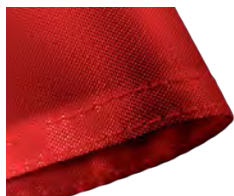
## THE RIGHT MATERIAL FOR YOUR PRODUCT

Our durable FlagSource fabrics are made to withstand the most inclement weather conditions. We print on the brightest white nylon in the industry which produces the truest blacks and the most vivid colors. We also offer three weights of Vinyl plus Vinyl Mesh, Satin fabric, our new Stretch fabric for fitted table covers, and Jersey Mesh for outdoor displays. Keep checking back for additional fabrics we plan to incorporate in the future.



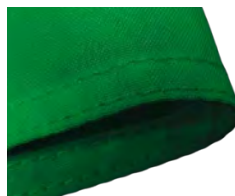
### DACRON 200D

- 200 Denier polyester material
- Single sided or Double face
- Flexible and lightweight
- Ideal for: Single or Double face banners
- Maximum print width: 60"



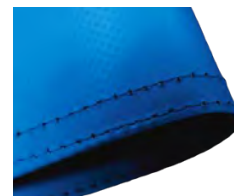
### NYLON 200D

- 200 Denier Nylon material
- Single face reverse or Double face
- Flexible and lightweight
- Ideal for: Single reverse flags
- Maximum print width: 60" or 70"



### 300D POLYESTER

- Wrinkle-resistant material
- Single sided or Double face
- Ideal for: Table throws, table runners, indoor banners
- Maximum print width: 70"



### VINYL

- Material comes in 18 oz, heavy vinyl. Ideal for: Avenue banners, Outdoor banners
- Double Sided
- Maximum print width: 126"



### 600D POLYESTER

- 600 Denier polyester material
- Single Sided or Double Face
- Strong and durable
- Ideal for: Larger, stronger banners, Tents and Avenue Banners
- Maximum print width: 60"



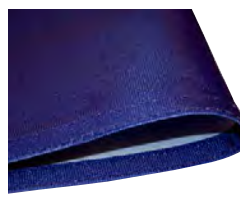
### POLY STRETCH

- Machine washable and wrinkle-resistant material
- Single Sided
- Flame retardant
- Ideal for: Table covers, EasyTube banners
- Maximum print width: 70"



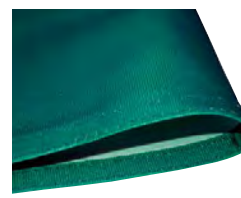
### JET FLAG

- Open-weave material
- Single sided or Double sided
- Maximum print width: 70"



### BLOCK-OUT POLY

- One layer of fabric with block-out woven into it
- Double face or Single reverse
- Heading & grommets only
- Maximum print width: 60"



### SPUN POLYESTER

- Heavy duty
- Durable for high winds
- Single reverse only
- Maximum print width: 60"

# Production & Color

## HIGH RESOLUTION PRINTING

After being in the flag making business for 95 years, FlagSource knows a thing or two about production. Our highly skilled employees are equipped with state-of-the-art printers and finishing equipment. The efficiencies we have created in production allow us to adhere to your deadlines, and our quality assurance is based on a deep-rooted dedication to you, our customer.

Our products are constructed with the finest fabrics, color-matched threads, best quality inks, and heavy duty accessories for maximum flying strength. Our expertise has earned us a reputation for providing you with the highest quality and longest wearing products on the market today.



### DIGITAL NYLON

- Ideal for single-reverse flags
- Direct-to-fabric printing
- Longest lasting UV inks
- Best backside penetration
- 600 DPI high resolution printing
- Able to print 71" wide without a join
- Closest Pantone matching system for digital fabric printing



### DIGITAL POLYESTER

- Ideal for flags, table throws, runners, indoor banners and backdrop banners
- Perfect for four color process, spot colors, and full bleed artwork
- Direct-to-fabric printing
- Able to print 71" wide without a join
- High resolution printing



## DIGITAL NYLON COLOR CHARTS

Our printed nylon chart (call for availability) displays the 1,095 Pantone® colors that have been hand-picked by our professional color team to match as closely as possible to each solid-coated color in the Pantone Matching System®. We have made this chart available to our customers in order to greatly simplify the process of choosing colors for custom orders, and to guarantee that we are providing the best color match possible. Charts can be purchased for \$60.



# Glossary of Standard Terms

**Avenue Banner:** Banners on brackets that hang from light posts. Generally will always have a sleeve at the top and bottom of the banner.

**Back Tack:** A reinforcement operation that puts extra stitching on the top and bottom of the fly end. Typically it is no longer than 3/4 to 1" in length. Standard practice on all fly ends.

**Bar Tack:** A reinforcement stitch/operation that is performed on WaveBanner™ only. It always needs to be performed to areas where there is an exposed chain stitch (heading).

**Blockout Innerliner:** A piece of material used to block the image from the back side showing through to the front side on a double faced product. For flag sizes 6x10' through 10x15'.

**Box Tack:** A reinforcement operation that is performed to the fly end. This operation is standard on U.S. flags only. This finishing is unique to FlagSource flags.

**Burgee:** A pennant with a swallow tail ("V" cut) flag used primarily by ships. All burgees are hemmed on 3 sides with a patch cover at the center of the "V" cut.

**Chain Stitch:** A series of looped stitches that form a chain like pattern. This stitch time allows our stripes to absorb energy when flying outside.

**Color Matching:** Matching the thread color to the blank that is being sewn. (White material - white thread). This is standard on all sewn products except the Attraction Product line.

**Concealed Heading:** A type of finishing where heading is sewn on and turned back so that it is not visible. This process requires that a single stitch be run along the bottom of the heading to keep it turned back.

**Cut Size:** The dimension material is cut before it is sewn.

**Double Face:** Copy reads correct on both sides (two pieces of material are sewn together).

**Double Sided:** Copy reads correct on both sides on only one piece of material.

**Double Sleeve:** Primarily used in conjunction with Avenue Banners. The standard size sleeve is 3".

**Electronic Heading:** A type of finishing that is used specifically for electronic flag poles. This process utilizes webbing material and is finished with the top and bottom edges finished like heading and d-rings, but d-rings are not used.

**Finished Size:** The dimensions a flag, banner, or other products measure after they are sewn.

**Fly End:** Four rows of stitching on the outer edge of a flag (away from the flag pole).

**Grommet:** An eyelet made of brass to strengthen or protect an opening or to insulate or protect something passed through it.

**Guidon:** a rectangular flag with swallow tail at fly end.

**Heading and D-Rings:** A type of finishing that is used on FlagSource flags 8x12' and larger. On flags, 10x15' and larger a #4 grommet is also inserted.

**Heading and Grommets:** A type of finishing that is standard on all flags. In general, the heading and grommets are on the left side.

**Innerliner:** A piece of Tyvek® used to block the image from the back side showing through to the front side on a double faced product.

**Leather Tab:** A piece of leather that is sewn into sleeves or pole hems that allows a flag to be attached to a pole. Primarily is used with indoor poles. (see Pole Hem Plain)

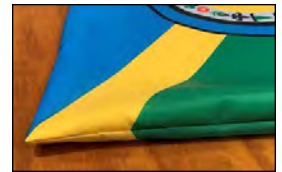
**Lock Stitch:** A sewing machine stitch formed by the looping together of two threads one on each side of the material being sewn. A bobbin is inserted into the machine for a bottom thread. This stitch type is used on all outer edge hems.

**Paper-Transfer Dye Sublimation:** Aqueous ink is embedded into a layer of coating on the transfer paper, which is then applied to polyester fabric with heat and pressure. The ink permanently becomes part of the fabric.

**Patch Grommet:** A type of finishing where a layer of material is sewn in as a patch and a grommet is inserted. The patch is necessary for a grommet to not pull out of the product.

**Pennant:** Triangular pieces of fabric primarily used for attracting notice. Hemmed on two sides with heading and 2 grommets or sleeve on the left side.

**Pillowcase:** A special type of hemming done on certain double sided flags. Designs that won't line up edge to edge get pillowcased or if there is an angled or some other special finish to the flag.



**Pole Hem Fringe (PHF):** A type of finishing that will fit over a pole. It is a sleeve that has a lining sewn in with a leather tab that is sewn in at the top center position. There is also fringe sewn on the outer hems of the flag. The standard size pole hem is 3". Spanish Yellow is the standard color for fringe, however, we also offer white and silver.

**Pole Hem Plain (PHP):** A type of finishing that will fit over a pole. It is a sleeve that has a lining sewn in with a leather tab that is sewn in at the top center position. The standard size pole hem is 3 inches.

**Raster Art:** An array of square pixels of various colors, which together form an image. When enlarging a raster image, each pixel increases in size and causes the image to become blurry. Quality depends on how many pixels are contained within an inch. The higher number of pixels-per-inch (ppi) the higher the quality. Not a preferred file type.

**Reinforced Hem (reinforced grommet):** Primarily used on banners and can be used in combination with a small hem. The reinforced grommet will allow a grommet to be affixed to it.

**Single Face:** Copy reads correct on one side and the reverse side is a mirror image.

**Single Sided:** Copy is on one side of material and the back side is blank.

**Single Sleeve:** Primarily used in conjunction with Avenue Banners. Material is folded over once and sewn down. The standard size sleeve is 3 inches.

**Six Row Special:** Six rows of stitching on the outer edge of a flag.

**Sleeve:** A type of finishing that will fit over a pole. The standard size sleeve is 3 inches. Sleeves can also be sewn closed at the top (also known as a simple sleeve). Fits 1"-1¼" diameter pole.

**Starfield:** Material with stars either embroidered or sewn on.

**Vector Art:** Vector graphics are comprised of paths which are defined by a start and end point along with other points, curves and angles. A path can be a line, square, triangle or a curved shape and can be filled with colors. These paths can be used to create simple drawings or complex diagrams. They can be scaled to a larger size and not lose any image quality.







impactwithcolor™  
DIGITAL MAKES ALL THE DIFFERENCE



**FLAGSOURCE®**  
J.C. SCHULTZ ENTERPRISES, INC.

951 Swanson Drive  
Batavia, IL 60510

Phone: (800) 323-9127  
Fax: (800) 352-4876

Email: [flagsource@flagsource.com](mailto:flagsource@flagsource.com)  
Orders: [orders@flagsource.com](mailto:orders@flagsource.com)



ASI: 85670 • PPAI: 110832 • SAGE: 50067



All prices subject to change without notice.

J.C. SCHULTZ ENTERPRISES, INC. / FLAGSOURCE © 2024